

MTSS Tier 1-2

Implementation Guide



Tier 1 Imbedded Services

- Provides immediate support for classroom teachers, staff and students
- Assures universal strategies have been trialed
- Reduces premature requests for screenings
- Saves time when students may need to transition to Tier 2 services



Tier 1 Imbedded Service Approaches

- **In Service** Occupational Therapy Practitioner provides inservice to educate teachers and model universal (non-student specific) strategies such as brain breaks, fine motor, etc. for use within the classroom and natural school setting.
- **Environmental Scan** Occupational Therapy Practitioner completes non-student specific, environmental scan. This may include environments such as cafeteria, playground, across grade level classrooms, or classroom specific.
- **6 week Tier-1 Intervention**
 - Throughout the 6 weeks, the occupational therapy practitioner will carry out the universal intervention plan based on environmental scan and initial teacher consult meeting.
 - Weekly consult with the teacher and appropriate staff.
 - Nearing the end of the 6 week plan, collaboration with teacher to determine students needing permission for transition to Tier 2



Tier 2 Administration and Parental Approval

- Tier 2 Sendero referral form completed
 - Student info (Name, DOB, is student on an IEP, student strengths, educationally relevant reason for request, etc.)
 - Functional checklist
 - **What pre-referral strategies/methods have been tried to remediate the addressed performance areas and what has been successful?**
- *Permission and signatures for OT screening services to be rendered as indicated.
 - Administration signature
 - School Psychologist signature
 - Parent signature

*The order of required signatures and process of approval can be modified per district request



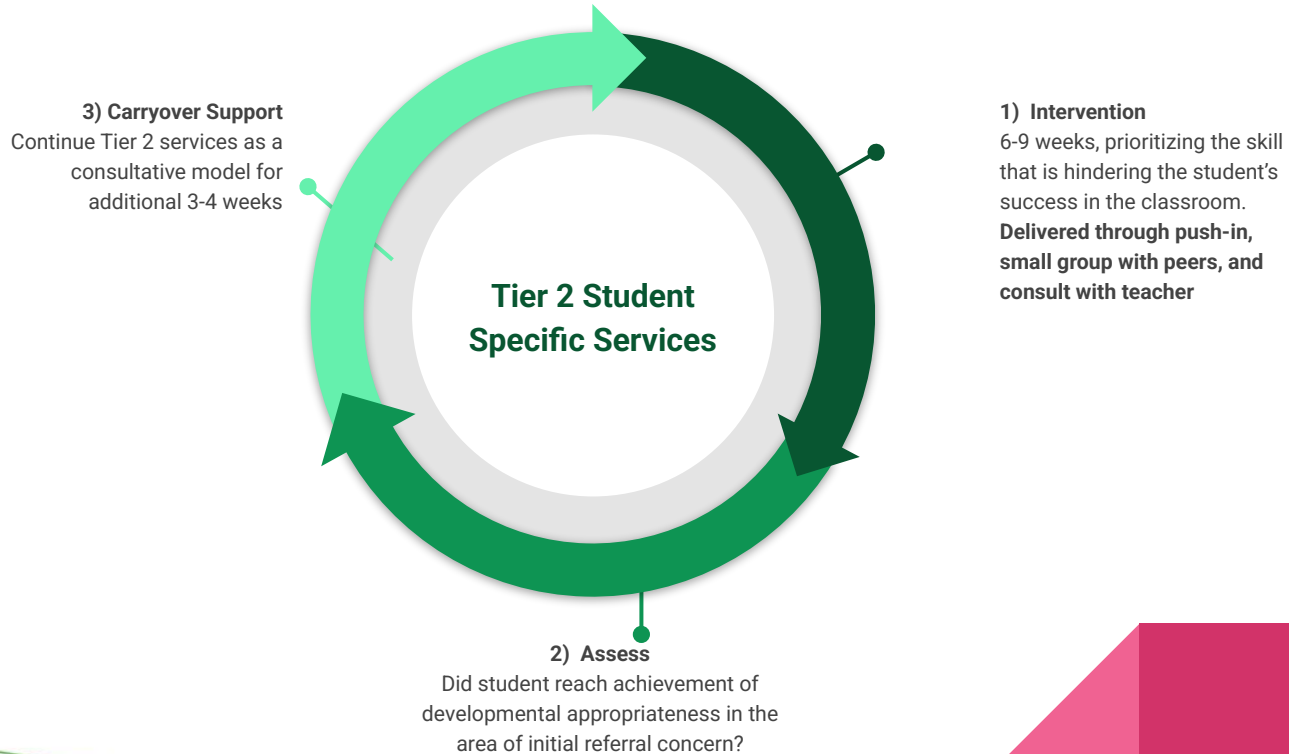
Transitioning Students to Tier 2 Services

Student specific intervention occurs

- Prioritize interventions while working with the student directly in his or her natural school environment and with peers.
- Provide skilled observations, accommodations, adaptations, and consultations/collaborations with teachers that will aid in student success in the classroom and academic path.
- A completed student intervention plan is completed by the team stating the frequency, duration, interventions and form of data collection
- SISPs keep a therapy plan of care specific to their discipline.



Tier 2 Intervention Service Delivery Wheel



Discharge from Tier 2 or Next Steps?

- **Discharge**
 - Parent and teacher receives progress report
 - Student is discharged from Tier 2 services
 - Student will continue to benefit from Tier 1 services and universal school wide services

- **Next Steps: Student remains on Tier 2 services while next steps are in process.**
 - In cases where intensity of instruction is needed past the service wheel timeline, then the process moves to eligibility of student for disability.
 - IAT meeting
 - Evaluation to determine eligibility for IEP

