

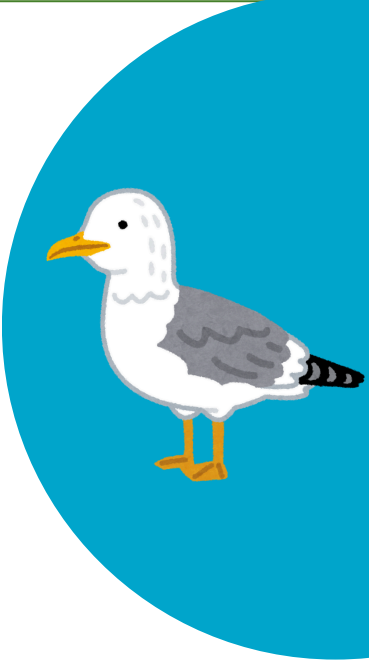
# MARBLEHEAD LIGHTHOUSE



The Marblehead lighthouse is a historic landmark for being one of the oldest operating lighthouses on the Great Lakes. It sits on top of a bed of rocks, creating the most picturesque place to catch a sunrise. The lighthouse captures a beautiful view of Cedar Point and Kelley’s Island. Visiting the Marblehead lighthouse is a must when in Ottawa County.

## WHAT IS OFFERED

Rock climbing \* Fishing \* Watch the sunrise \* Picnic: tables or bring a blanket and sit on the grass \* Tours of the lighthouse during the summer months (77 winding steps to the top \* \$3 per person, free for children five and under) \* Bird watching \* Museum and gift shop (Five steps to get into the building)



## ENVIRONMENTAL CONSIDERATIONS

- Paved paths around the lighthouse
- Lots of parking (4 handicapped parking spaces)
- Big trees offering lots of shade
- Need balance and coordination for maneuvering around the rocks
- Rocks are slippery when wet
- Rocks could be a hazard for young kids or kids with disabilities
- High waves on windy days
- Restrooms that are handicap accessible

## TASKS

- Have a picnic
- Walk along the trails
- Birdwatch
- Fish
- Watch the sunrise
- Take photos



## TOOLS

- Verbal cues to remind people that rocks are slippery when wet
- A chair to sit on when fishing

